



Down Ampney Newsletter

JANUARY 2024



Please send all articles for the FEBRUARY issue to DownAmpneyNews@gmx.com by **15th JANUARY**

Down Ampney Village Hall

BURNS' NIGHT SUPPER - FRIDAY 26TH JANUARY 2024



Celebrate the life and Poetry of *Rabbie Burns* with a traditional ceremony and friends, including *the Selkirk Grace, Piping in of the Haggis, Address to the Haggis* and *Toast to the Lassies* !!!

The Bar will open at 7.30 pm and the Supper starts at 8.15pm.

A Raffle will raise funds for a Village Cause

Please note, there will be **No Entrance Fee** so do let Su Moody, Jackie Scuri or David Job know by 18th January if you will be attending as we need to know how many haggises we need to kill !! There will also be a list in the Village Shop.

Please bring a dish of Tatties and Neaps to go with Haggis, or a dessert to share.

(Also, let us know if you prefer sausages instead of haggis)

If you would like to receive a digital copy of the Newsletter (PDF format) in addition to your paper copy, please send your email address to **downampneynews@gmx.com**

Digital copies are also available on the 'Down Ampney Online' facebook page, and the village website:
<https://www.downampneyvillage.co.uk/>

Deadlines and Advertising

The deadline for contributions is 15th of each month. Please submit your copy (but not paid adverts) by **noon on 15th** to **DownAmpneyNews@gmx.com**, or post/deliver to Fieldview, Down Ampney GL7 5QW (behind the phone box).

If you would like to advertise your business, please email us with your contact details and to discuss prices and requirements. Charity adverts benefit from special rates.

Please send submissions in MS Word, Word compatible, or Publisher format, or as a JPG or PNG, as we do have to reformat or resize some contributions. It would also help if you use Calibri font, size 11 or 12. Please avoid underlining or formatting. Emails are also acceptable.

Thank you — Su Moody, Editor

NEWS FROM ALL SAINTS' CHURCH, DOWN AMPNEY

Dear Friend

I love the snowdrops in our churchyard – at the start of a new year they are signs of new life, renewal and hope. It's sometimes hard to see those signs in a war weary world, where things have felt unsettling and uncertain over the past year or so. We have all been affected by international and economic issues one way or another. It's not always easy to see the positive and some of us are disposed to be '*glass half empty*', rather than '*glass half full*' people.

One of the things that lifts my spirits is seeing a rainbow – they are transitory, ethereal arcs of colour from land to sky. In the Old Testament we are told that the rainbow was a symbol of a 'covenant', a binding contract, with the human race that God would not wipe out humanity. They are a sign of hope on the other side of darkness.

I'm not one for New Year Resolutions, but perhaps this year my resolution needs to be 'Look harder'. Look harder for the signs of hope; look harder for the image of God in others; look harder for the opportunities to sow seeds of love and care.

Over the past year or so, across the churches in the Cirencester Deanery we have been developing a 'Deanery Strategic Plan' or DSP, as it's referred to in documents. I confess strategizing has never been something I have enjoyed, necessary as it is to satisfy the needs of bureaucracies and corporate decision-making. What made me smile though and made me feel rather more positive about our DSP was someone saying: 'Of course our DSP can be summarised as '*Do Something Positive*'!'

At the start of this New Year and across 2024, I hope that we can all find it within us to look harder for signs of hope; do something positive for ourselves, our neighbours and our communities; and look for those rainbows.

As ever — *John*

CHURCH SERVICES - JANUARY 2024

In order to save winter fuel (and costs!) – we are not holding 8am services in January

Sunday 7th January *Epiphany Sunday*
10am Parish Communion Down Ampney

Sunday 14th January *2nd Sunday of Epiphany*
10am Parish Communion Driffild
10am Word & Worship Harnhill

Sunday 21st January *3rd Sunday of Epiphany*
10am Parish Communion Ampney Crucis
10am Word & Worship Harnhill

Sunday 28th January *4th Sunday of Epiphany*
10am Parish Communion Poulton
10am Word & Worship Harnhill

Sunday 4th February *Candlemas Sunday*
10am Parish Communion Down Ampney
10am Word & Worship Harnhill

-oo0oo-

LENT LUNCHES

You would be welcome to join us for a Lent Lunch (homemade soup, cheese and a roll) at The Rectory, Ampney Crucis – near the Village Hall:

12.30 Tuesday 27th February

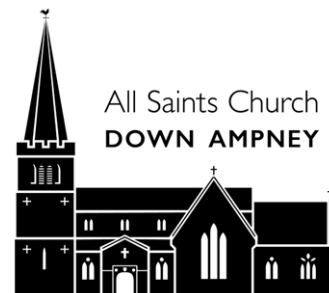
12.30 Wednesday 27th March

Donations towards Youth and Children's Work in the Cotswolds.

Please let us know if you are planning to join us. You would be very welcome. Thank you.

-oo0oo-

There will be a **Coffee Morning** on **Wednesday 24th January** at Down Ampney Village Hall 11-12 – coffee, cake, chat and good company! All welcome.



Church website: www.ampneychurches.info

Rector: The Rev'd Canon John Swanton Tel: 01285 851309

Email: ampneyrector@gmail.com

To book, email jackiegloyn1@gmail.com
or text 07970 969639

FOODBANK FUNDRAISERS

6 THE PHEASANTRY GL7 5RE

JANUARY

WED
3

SAT
6

THU
11

Soup lunches in aid of Cirencester Foodbank.

At the final lunch there will be a **prize draw** for
a **WEEK'S HOLIDAY FOR 6 IN NORMANDY**

courtesy of Sue Herdman. To
enter post £5 to Jackie Gloyn at
the above address, and don't
forget to include your name and
contact details for gift aid!

LET'S BEAT LAST YEAR'S TOTAL OF £1K!



BRITISH LEGION POPPY APPEAL

2023

The Primary School and the Village Shop collected £270.89 in their boxes this year.

The total collected by the Fairford Branch of the British Legion was £6,198.87. So Down Ampney made a significant contribution to the overall total. A great result!

Thank you ALL. Janet

RIDE and STRIDE 2023



**£1085 raised, thanks
to your support**

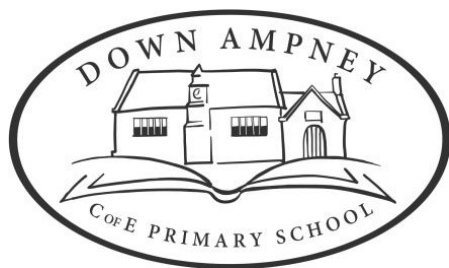
3 riders this year for the sponsored bike ride in support of the Gloucestershire Historic Churches Trust, Michael and Tony Large and Ray Singleton. We raised £1085 (excluding gift aid), which included a generous donation of £380 from the Kier Foundation.

This year, we went further afield exploring the churches in the Northleach Benefice. St. George's, Hampnett is a real surprise. It has elaborate wall paintings in various styles; every surface is covered with intricate patterns of red and ochre. The paintings are relatively modern and were instigated by the eccentric Victorian pastor, Rev'd Willian Wiggin. I recommend a visit – you would not expect to see decoration like this in a Cotswold church. It was a challenging ride, hilly at times, in exceptional weather.

A huge thankyou to all our sponsors in the village and beyond.

50% of the total will be returned to All Saints', Down Ampney. Across the county, GHCT has raised in excess of £43000, a significant increase on last year. This will contribute to the grant funds supporting restoration and upgrading projects at Churches of all denominations around the county.

Ray Singleton



At Down Ampney Primary School we promote a love of reading and encourage all to read for pleasure.

We alongside a number of other local schools are part of a year of reading project. This project has enabling pupils and teachers from across these schools to be involved in a variety of activities and events to promote reading for pleasure. This is in addition to promoting the love of reading and reading for pleasure that happens in school every day.



As part of our weekly Book Club, Class 3 restocked our class book shelves, choosing a range of authors and genres that they wanted to read. We recommended books to each other and the children created a shelf of books each of them had read that they thought others would enjoy!

Some children in Key Stage 2 visited Stroud Book Festival, thanks to the Year of Reading, where they attended a talk from the author Natasha Farrant. She talked about how books are a simple technology which bring us so much, what has inspired her and how she has turned her experiences into stories within her books. We were also lucky enough to get a copy of one of her books signed for our school library!

Year 2 had a fantastic time at Stroud Book festival on Friday 10th November, meeting Smriti Halls and Ken Wilson-Max. They got to hear about what has inspired their stories and even came up with some of their own characters, where the children were the heroes of their own stories! The children also helped create some interesting characters with Ken Wilson-Max, where he drew animals heads with different bodies and came up with names and unusual diets for them! It was great fun and definitely inspired the children to keep using their imaginations in their writing.

We are very fortunate to have volunteer adults to hear children read for pleasure, a parent librarian and many book donations throughout the year. If you think you could offer any additional support to promote this love of reading, do get in touch.



DOWN AMPNEY FUND-RAISING GROUP

An introduction to Down Ampney Fundraising Group (DAFG)

The reformed **DAFG** has been set up to provide event advice to individuals or groups aiming to raise funds for local causes.

This year, the DAFG Committee have organised:

The successful and enjoyable **Motown and Soul Evening**
The **Christmas Gift and Craft Fair** held on 2nd December

If anyone has an event or idea, e.g. horse racing or quiz evening the DAFG Committee will be happy to provide guidance: Maureen Gregory [Chair], Su Moody [Secretary], Jackie Scuri [Treasurer]

A dedicated bank account, card reader & email address has also been set up to make it easier when organising any fundraising event.

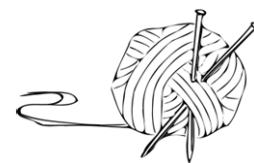
For more information or to discuss ideas for an event plan, please contact:

daevents@gmx.com or **Maureen Gregory on 07813 035473**



Down Ampney Arts & Craft Circle

Every 2nd and 4th Tuesday, 1:30pm-4pm
Down Ampney Village Hall



Watercolours, acrylics, pencil, pen & ink, crafting, knitting, crocheting, etc. - anything creative you wish. It's a friendly space to create, explore, develop, help and support each other, share, be inspired, and express yourself. Feel free to come along for a cuppa and to see what's happening.

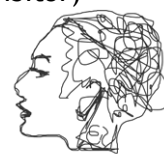
The next meetings will be **Tuesday 9th and 23rd January**

(Membership £40 for 2024 including SAA group membership, £3 per session as a visitor)

Occasional workshops will be notified and priced separately.

Contact: DAACCGL7@gmail.com

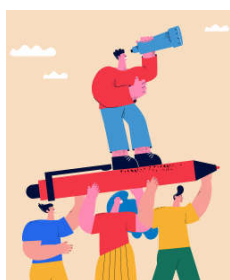
www.facebook.com/groups/DAACC/



Down Ampney FC Social Club Bar opening times

Friday and Saturday 7:30 till 11 pm. Sunday 7:30 till 10:30 pm.
Membership of the Social Club is £2.50 for the year.

Sunday nights are **bingo** nights starting at 8.30pm



Cotswold Writers Circle

This is a small group of people who enjoy writing stories, both short and long. You don't need to have published - we meet on a **Tuesday morning at 10.30** in the Dakota Room of our Village Hall.

Paying £2 for our coffee and biscuits, having a laugh together and enjoying writing and listening to our friends.

For further information contact Derek Skinner. Phone 01793 750598 or email derekskinner1@talktalk.net



FRIDAY NIGHT FILM NIGHT

7 for 7:30pm, Down Ampney Village Hall in the Dakota Room. Open to all (over 18's only), the bar will be open before and after. Entry is £2, all profits going to the Village Hall.

FRIDAY 19TH JANUARY: "Knives Out" - starring Daniel Craig, Christopher Plummer, Chris Evans and Jamie Lee Curtis. A murder mystery with an ensemble cast. A famed private detective is summoned to investigate the death of a best selling author.

Contact www.facebook.com/DAFilmNight/ or FNFNmail@gmail.com
for information or with your film suggestions



A reminder:- PLEASE save used postage stamps

I have been sending off the used postage stamps, that our community saved at the shop. for three years now. We save them to raise funds for 'Against Breast Cancer' and for each kilo I send, the charity can raise £20. In these three years **YOU** (that is, the village) have raised almost £200, for this worthy cause.

Please continue to save stamps by leaving approx. 1cm of envelope around the stamp. By tearing the envelope any closer it means the stamp can't be removed from the backing paper so easily and may be rendered useless. By leaving more than 1 cm, it means we are paying for more waste paper to be posted. Not a good use of our funds. I look forward to packing the next kilo after Christmas. The box for stamp collecting is still in my porch (The Nook)

With thanks, Janet Singleton



Cricklade and District Probus Club

We are looking forward to our coming group meetings when the following talks will take place.

11th January

Sometimes they just got things wrong

25th January

The Science and side effects of Sword Swallowing

The meetings normally take place fortnightly on a Thursday at 10.00 am at the White Hart Hotel in Cricklade. Ours is a friendly group who enjoy keeping our minds active and socialising over a drink in the bar after the meetings. We are actively seeking to expand our numbers and look forward to welcoming new members to the Club.

For further information about our local club please contact the Honorary Secretary, Richard Roberts on 01793 751063



Down Ampney and Local Ladies

The 'Down Ampney and Local Ladies' group is taking a sabbatical! But there are still funds available if anyone from the village wants to re-start the group, and there is still some interest from the ladies of the village to meet in friendship.

The remaining bank balance is £471.98 which can be made available via the Treasurer, Jenny Collyer, to support activities for Down Ampney & Local Ladies. An accounts summary can be found below.

If you have any queries, please contact Jenny Collyer on jennym.collyer@gmail.com

Down Ampney & Local Ladies – Accounts Summary 2020 – 2023

	2020 (Jan-Mar)	2021 (May-Dec)	2022 (Jan – Dec)	2023 (Jan-Jul)	TOTAL DALL
Opening Balance	£ 1.00		£701.40	£649.29	
INCOME					
Donation to start DALL	£150.00	£0.00	£0.00	£0.00	£150.00
Membership subscriptions	£ 675.00	£ 162.00	£ 474.00	£ -	£1,311.00
Visitor fees	£ 40.00	£ 85.00	£ 165.00	£ 39.00	£329.00
Raffle takings	£52.00	£ 109.00	£ -	£ -	£161.00
TOTAL Income	£917.00	£356.00	£639.00	£39.00	£1,951.00
EXPENDITURE					
Hall hire costs	£ -	£ -	£ 131.40	£ 120.39	£251.79
Speaker fees / monthly meeting costs	£ -	£ 376.18	£ 497.05	£ 95.92	£969.15
Tea / coffee / refreshments	£ 10.30	£ 15.29	£ 50.11	£ -	£75.70
Raffle costs	£ -	£ 117.58	£ -	£ -	£117.58
Miscellaneous costs	£ 45.25	£ 8.00	£ 12.55		£65.80
TOTAL Expenditure	£55.55	£517.05	£691.11	£216.31	£1,480.02
TOTAL FOR YEAR	£861.45	-£161.05	-£52.11	-£177.31	£471.98



Down Ampney Village Shop

SHOP ♦ CAFE ♦ POST OFFICE

The cafe is now selling drinks, sandwiches, pastries and savouries to order.

New Special Meal Deal: Sandwich + Crisps + Drink £3.95

Opening hours: **Shop 9-12 every day.**

Post Office 9-12. Mon, Tues, Thurs and Fri

The shop will be closed on Xmas Day, Boxing Day and New Years Day

The shop offers a wide range of essentials and if we don't stock it we can try to get it for you.
The shop is run by volunteers and we badly need new ones to help out, even if only occasionally.

If you're interested or for more information please contact:

Tony Peel simpeel@btinternet.com or Peter Baillie davs2016@hotmail.com

DIARY OF A VILLAGE SHOP VOLUNTEER (DAY TWO)

Day One was not an unqualified success. I began seriously to think that my career as a shop assistant was over. But the other day the phone rang. Another chance! This time - no mishaps.

I arrived promptly at 8.25 for my 8.15 start. A small family crisis had slightly delayed me. When I arrived, my heart sank. My saintly mentor of the past was not there. A new one stood stern and severe in his stead. This one, I knew instinctively would take no prisoners. The meaningful glance at the clock spoke a thousand words. I wasn't wrong.

Task one, check the fridges. Done it before. It's not without its pitfalls, finding the thermometers for a start, but I knew I could hack it. I put in a pretty creditable performance until I reached the big Wall's chest fridge. The temperature gauge is outside at the very bottom. My saintly mentor had read it for me last time, since having metal knees I find kneeling on a hard surface difficult. My new mentor was not the kneeling sort. Anyway, I was too awestruck to ask. There was nothing for it. I'd have to read it lying down. With some difficulty I eventually I achieved the prone position and managed a squint at the temperature dial.

It was at this juncture that two lady customers walked in. They immediately sized up the situation. A heartless mentor totally ignoring the hapless plight of an elderly minion who had tripped and fallen. With a withering glare at the mentor, they flew to my aid.

Meanwhile, only too aware of my predicament, I was struggling to stand up. With funny knees this can only be done in the manner of a camel, stiff legged, bottom uppermost. As I sought my point of balance, I tried at the same time to crawl up the side of the fridge with my hands. Realizing how undignified this all must look; the humour of the situation overcame me and I began to chuckle. My helpers immediately thought I was fitting and redoubled their efforts of recovery.

It took some time to sort it all out. Ultimately it all ended in smiles, that is with the possible exception of my new mentor. The time could have been better spent.

Meanwhile, the cash register with its quirky little eccentricities and playful punches to the solar plexus had been exerting its peculiar allure. I yearned to get my hands on it once again and to master its mysteries. Pointedly, my mentor did not see me as in any way yet ready for such a task. I decided to wait my opportunity to prove myself.

My chance came when my mentor was briefly in the kitchen. A new customer entered. I greeted her this time sotto voce and with a smile and a cheery wave so as not to alert the kitchen. Confidence surged back as I took the tiller at the till; a figure of authority again. Just milk. A simple purchase and by cash too. Casually I stabbed at the till's electronic visage, getting all the right responses. Suddenly the temperature dropped.

Instantly, I was aware of the austere presence of my new Mentor. Confidence froze. My once certain fingers

hovered hesitatingly over the till's supersensitive surface. Immediately the maverick little beast seized the opportunity of my wavering fingers for a session of free expression. Lights flashed everywhere. There was a sharp intake of breath from behind me. I spun round. The little monster took the opportunity of my turned back and delivered a sharp rabbit punch to the kidneys. I abandoned the field and fled.

The mentor spent the next twenty minutes pointedly sorting out the muddle, muttering between long exasperated sighs to some Mentor deity.

After a long silence, I was released from purdah with the conciliatory words, "Do you think you can get us all a cup of coffee?" in a tone of voice that hinted that this might just be within my limited skillset.

I succeeded. My efforts were rewarded by a word of thanks, more in surprise than gratitude, I thought. I was back in the swim again.

My next opportunity came when four athletic young tennis players breezed in exuding fitness and fresh air, and wanting coffees. Since I had already proved myself, I was given this task. I determined not only to succeed but to excel.

My Grandson is a trainee manager at the Calcot Manor Hotel. He had shown me how the professionals carry a tray with one hand underneath. I could do that. It looked dead easy. I got all the different orders for coffee and placed them on the tray according to where each customer was seated. I noted that the coffee mugs didn't quite fit the saucers, but there was little I could do about that. I'd just be careful.

I emerged briskly and confidently from the kitchen, the picture of professional competence. One hand under the tray, I fixed the customers with a confident smile and advanced swiftly. '*Never look at the tray*', my grandson had warned. I risked one brief glance. I should have listened to my grandson. All wasn't well. Two of the mugs had slipped from their saucers and were leaning at a dangerous angle towards the customers. A quick rush forward and at the same time raising the tray was just enough to avert disaster. I halted my forward dash just in time too.

I learnt later that my innocent antics had been totally misinterpreted by the wary young athletes. My confident smile was interpreted as a manic leer, my brisk advance from the kitchen as an aggressive charge and the angle of the tray as if I was about to throw the entire contents all over them. Blessed with swift reactions honed on tennis courts, with one accord, they abandoned the table. Chairs were scattered and overturned, one tennis player tripped and went sprawling.

Somewhat surprised at this reaction to my only slightly precipitous arrival I ignored their sudden exodus and carefully placed each coffee cup in its allotted place as if nothing untoward had occurred.

When they warily returned to the table, "Is there anything else I can get you?" I asked with masterful aplomb.

When they had recovered, they did try to explain the situation as they had seen it and I think we all saw the funny side. Keeping my dignity to the last, I retired to the kitchen and allowed myself a quiet nervous breakdown.

The silent reproach from my mentor spoke ten thousand words.

AFTERNOTE

The discerning reader will realize that the above is a vast exaggeration of events and of personalities, except perhaps only that of my saintly mentor. I never could let the strict truth get in the way of a good story. I have really enjoyed my time as a shop volunteer. I now realize just how much work particularly those at the mentor level put in on behalf of us all and I am truly overawed. Being a volunteer has been great fun and I at least have had a lot of laughs. Everything I have related did actually happen, but perhaps not quite in the way it has been described. And I would like to thank the two kindly ladies who picked me up off the floor. Who knows, there even might be a DAY THREE, but somehow I doubt it, don't you?

DOWN AMPNEY NEIGHBOURHOOD PLAN

Very Important News

The Independent Examiner of the Neighbour Plan has accepted the Plan with a few modifications. The next stage is a referendum of residents of the parish to accept or reject the Plan. This is likely to be held towards the end of February. We would urge everyone to vote.

The key points in having this Neighbourhood Plan are:

- 1) Duke's Meadow (the field opposite the school) will be designated as Local Green Space. This will help to protect the field from development, something the majority of the village has called for.
- 2) The concerns of residents about surface water flooding and problems with the sewerage system are highlighted with policies to address them.
- 3) Certain views and vistas within the parish must be taken into account when any development is planned.
- 4) Green infrastructure within any development must be considered.
- 5) Having a Neighbourhood Plan greatly increases the money given to the Parish from the Community Infrastructure Levy that is payable by developers.

Thank you all for supporting and assisting the Steering Group in getting this far with the Plan.

The Neighbourhood Plan Steering Group

Dear DA Residents

Many of you will know that a small working party have been involved with developing (excuse the pun) a major document that will evolve into a 'Neighbourhood Plan', which hopefully will be accepted by the Government and CDC in relation to the upkeep and future of our village. It is fast nearing completion with a recommendation of acceptance.

It should be known that apart from associated members of the 'steering Committee' two hard working gentlemen have spent hundreds of hours writing, and arguing, over points with CDC and an external examiner to achieve a worthy document that will fulfill safeguards for our village and, to which, we should, collectively, be extremely grateful. They seek no praise nor speak out loud but recognition need be heaped on them for the hard work that has been unstintingly made to achieve an end on behalf of us all. We owe a large vote of thanks to both Mr. Andrew Scarth and Mr. Geoff Tappern who have been the prime movers of this work.

From Down Ampney Parish Council

Cllr Busby and I met with Highways and Sanctuary to discuss the recent flooding from the site down to the War Memorial. It transpires that most of the storm drains from the Poulton Road turning to Broadway Farm entrance have, over the years, collapsed resulting in the drains not flowing as they should. As part of their obligations, Sanctuary have agreed to repair the drains when they connect to the pipe going across the road. An application has gone into Highways to close the road so that works can be carried out. Expectations are this will be done Jan/February 2024.

At the same time, Highways have agreed to flush out the drains from the War Memorial down to Dukes Meadow in case of blockages.

Wellcome Trust have been clearing out the ditches around the estate to alleviate the flooding down the West end of the Village and around the Back Road. There are still some ditches left to do but require further investigations due to possible badger sets. The Co-op have instructed a contractor to re-instate the ditch which used to be at the back of the Village Hall/Shop.

You would have seen the state of the main road and Oak Road due to the three development sites and recent wet weather. We continue to push both developers to take a pro-active approach to cleaning the roads during wet weather.

By the time you read this, you may have noticed that the Co-op are advertising three parcels of land via Rightmove. They are no longer going to auction but private treaty. They are the two fields north of Down Ampney and the field south of Rooktree Farm. The latest dates I have for the remaining land (subject to change) are:

February Auction

Millennium Paddock (also known as Dukes Meadow)

April Auction

- The Hub
- Football Pitch

Access strip and amenity land at Dukes Field

You would have noticed in this DA News that the Parish Council has gone out to consultation to the village as to whether you support the Parish Council taking out a loan to try and acquire some, or all the above four assets. It is an opportunity for you to have your say and therefore please complete the form and drop into the Shop.

I met with Craig Suffolk, from Bromford, to discuss maintenance of the trees (by the footpath leading through to Linden Lea) and some of the verges by the parking spaces. He has agreed to investigate whether these are in the ownership of Bromford and therefore works carried out.

I continue to push Bromford for a date for fixing the flooding in Broadleaze.

THE HUB

As per the observation in last month's newsletter, we hope that villagers will note the improvement to the approach road up to the village hall where the area to the right of the road has been scraped and new flint gravel laid along the length of the road. The same has been applied to the surround of the MUGA pitch, the footpath side of the tennis court and the area in front of the village hall.

We would like to thank Hills and Sanctuary Group for their support in providing and laying the gravel.

In addition to the above, we are checking on the possibility of repositioning the shop's waste wheely bin to the top end of the access road, to eliminate the need for the collection vehicles having to enter the car park, thereby, reducing wear to the recently renovated surface. Quotations are being obtained for a fenced enclosure for the bin, should this move prove to be a viable option.

GRASS CUTTING

The Parish Council are in the process of evaluating the tenders received for a new three-year contract to maintain grassed areas throughout the village. We hope to be in a position to award the contract by the end of December.

TENNIS COURT

As per a notice, recently circulated by the tennis club committee, the hut has now been winterised', with water services be drained and shut off.

LORRY WATCH

It has been reported there is an increase in heavy lorries passing through the village. However, nothing can be done unless the vehicle registration number, time, and direction are reported to Cllr Hedges Brian@downampneyvillage.co.uk.

PLANNING

Apologies have been received from Cotswolds Homes to all the residents of Dukes Field who have been inconvenienced recently in either trying to access or exit via Dukes Field Road and have found their route temporarily blocked. The mud being generated has been excessive due to weather conditions. Locals will have noticed the input of hardcore onto the site as the ground was unstable. Foundations are going to be piled into it!

The ground workers did find a WW2 blast shelter in the far corner of the site and archaeologists were duly called in to examine it. Pictures and measurements have been recorded to archive.



Consultation on purchasing Village Assets from the CO-OP

As promised in previous communication(s) the Parish Council are now coming out to the Village to consult on the possible purchase of our Village Assets from the CO-OP.

During the Village Meeting held some months back, those that attended voted that we, the Parish Council, should work to secure the assets listed below.

February 2024 Sale by the Co-op

Dukes Meadow (Millennium Field)

April 2024 Sale by the Co-op

The Hub (which consists of Village Hall, Shop, Tennis Club, Community Garden, Playground and MUGA pitch)

Access Strip and Copse (around the back of Old Estate Yard).

Football Fields

The Parish Council has been trying to get the CO-OP to sit down and discuss with us a figure for purchasing the assets they are disposing of in February and April however, they have refused and want all the above assets to go to the highest bidder. This has meant that we have been unable to secure funding through various schemes. I.e. the Lottery Fund.

To enable the Parish Council to bid for any of the above listed land parcels, our only option would be to take out a loan from Central Government via the Public Works Loan Board (PWLb), which is then repaid over an agreed period through the precept. This will result in everyone's Council Tax going up. The potential effect of this is detailed below.

The 2023/24 precept for a Band D property is £87.48 per year (though this will increase for 2024/25). Depending on your property Band, it may be less or more than this.

To keep the financial impact to a minimum, the Parish Council feel that a loan of £100,000 would help us to secure some or all the above assets.

To borrow this amount of money, over a 10-year period would increase the current precept by £44.60 per year for a Band D Household or 51% i.e. 86p per week.

To borrow this amount of money, over a 20-year period would increase the current precept by £27.52 per year for a Band D Household or 31% i.e. 53p per week.

To calculate your impact, please multiply the Band D figures above using the formula below based on your Council Tax Banding.

Band A entitled to disabled relief reduction	Band A	Band B	Band C	Band D	Band E	Band F	Band G	Band H
5/9	6/9	7/9	8/9	9/9	11/9	13/9	15/9	18/9

If all this money is not required, we can repay to Central Government (minus an early payment charge) or reduce future precepts by an amount. Also, when all the houses being built in the village are occupied, we can use that additional money to reduce future precepts, though there is no guarantee.

If the assets are acquired, we will continue to work with local companies and other funding sources to reduce future precept payments.

If we are successful, those assets acquired will be deposited in one of numerous schemes to protect them now and for future generations. We will evaluate the pros and cons of each scheme before deciding on the one providing the best protection.

The Parish Council clearly do not want to pursue this option without the support of residents so, we have included an opportunity for you to have your say on a) whether we raise money with which to purchase some, or all of the assets and b) if secured, what we do with the assets. Below you will find a voting form, which provides you with the opportunity to have your say on whether you support the Parish Council to apply for a loan and which assets we should prioritise first.

Given this may have an impact on your Council Tax, it is a one vote per household and whichever option receives the most votes will determine the outcome.

If the consensus is the Parish Council should not take out the loan, then we have done as much as we can under the circumstances, and the village must accept that the assets will be sold to the highest bidder.

If you have any questions on filling in the form, please email the Parish Clerk: downampneypc@gmail.com

Deadline for submitting your Slip in the Shop is January 15th, 2024.

(Please place an 'X' in the box which reflects your preference and then tear-off the slip and hand in to the Village Shop)

We/I _____ (House Number) (**Optional**), of _____ (Post Code) (**Mandatory**) vote for:

Tick Box	Option
	<u>YES</u> : We support the Parish Council to secure a loan and paid back through the Precept over <u>20</u> years to purchase some or all the assets listed above.
	<u>YES</u> : We support the Parish Council to secure a loan and paid back through the Precept over <u>10</u> years to purchase some or all the assets listed above.
	<u>NO</u> : We do not support the Parish Council in taking out a loan outlined above.

If you voted Yes: We believe the Parish Council should prioritise the following assets ([please rank 1-4 with 1 be highest priority]). **If you voted No above, then leave blank**:

Rank 1-4	Option
	The Village Hub
	Dukes Meadow (Millennium Field)
	Football Fields
	Access Strip and Copse.

If you voted Yes: We believe the Parish Council should use the assets for the following purposes (please tick one option for each of the two assets). **If you voted No above, then leave blank**:

Asset	Intended Use	Tick Box
Dukes Meadow	Keep as an agriculture meadow with grazing animals.	
	Create a tranquillity garden with seats and paths, planting shrubs and fruit trees.	
Access Strip and Copse.	Retain as open space/wildlife area.	
	Nature trail with gravel paths for school and residents with additional seating.	



FRIENDS OF FAIRFORD & LECHLADE COMMUNITIES

(Reg. Charity No: 1180059)

YOUR LOCAL CHARITY

Serving Fairford, Lechlade and the surrounding villages.

(Formerly League of Friends of Fairford Hospital)



News and Information from your Community Friends

FESTIVE WISHES TO ALL OUR FRIENDS AND SUPPORTERS

The Charity sends our best wishes to all through the festive season and beyond. Thank you to everyone that has supported us this year. Whether you attended an event, made a donation, volunteered or helped to raise awareness of what we do, we are very grateful.

LUNCH CLUB LAUNCHING ON MONDAYS

Our much-loved Edna Dawes Lunch Club will be launching on Mondays from **15th January 2024** as well as Wednesdays. We provide a warm meal, activities, socialising, refreshments and transportation if needed, all for a low cost of £10. Please get in touch with Katie, EDLC Team Leader, for more information on attending Monday or Wednesday Sessions or to volunteer with us: edlc@friendsoffairford.org.uk or call 07713 607 106.

-- DO SOMETHING NEW IN 2024 --

If you would like an exciting new opportunity, want to meet new people and help our Charity continue supporting the health and wellbeing of local people, please consider volunteering with us. We have a variety of roles available including working in our Charity Shop in Lechlade as well as those listed below:

TRUSTEES

We are seeking new Trustees to take on the Chair and Vice Chair roles, and for Trustees to take responsibility for various Subcommittees. For more information or to discuss, please contact Shelley on chair@friendsoffairford.org.uk

PATIENT TRANSPORT SERVICE

Our volunteer car service is a lifeline to many. We would welcome more volunteers, please do get in touch if you can assist. Fuel costs are covered. If you think you can help, please contact Val on transport@friendsoffairford.org.uk / 07540 798226.

CHARITY RECIPE BOOK

Want to see your name in print? We're creating a Community Recipe Book! We're are still needing more submissions of your favourite personal and 'secret' family recipes (images welcome too!). Please send submissions to admin@friendsoffairford.org.uk

BEREAVEMENT CAFE

We continue to run our Bereavement Café on the first Friday of every month, for people who have suffered a loss and would like to talk. Our nursing team will be present to welcome you with a hot drink and some refreshments. Please do drop in, between 10:00 and 12:00 at The Barker Room, Fairford Community Centre. If you have any questions, please call 07938244335 or email: admin@friendsoffairford.org.uk

NEW ADMINISTRATOR

Our new Administrator called Agneta started with us in November. She has lived in Lechlade for 16 years and has a wealth of administration experience with a background in working at a local Foodbank as well as other jobs including RIAT and as a Careers Advisor. She also volunteers at our Shop in Lechlade. She is a creative person who is an artist and keen on sewing and cooking. We welcome her: admin@friendsoffairford.org.uk

HOW TO DONATE

If you would like to make a donation you can do so online through our website **www.friendsoffairford.org.uk** or by sending cheques made out to 'Friends of Fairford' and posting to Friends of Fairford & Lechlade Communities Charity Shop, Lloyds Chambers, High Street, Lechlade, Glos GL7 3AE. If you are able, we'd really appreciate it if you could complete a Gift Aid Declaration so we can claim an additional 25% of your donation from HMRC. Forms can be found on our website. Alternatively, you can transfer donations via your bank using Friends of Fairford and Lechlade Communities Treasurers Account, Sort Code 30-90-89 Account No 40621760 Please use the reference 'DONATE' followed by your surname. If you are a tax payer and able to Gift Aid, please email admin@friendsoffairford.org.uk giving details of your transfer including your full name, so we can claim an extra 25% which will cost you nothing.

Information on what we do can be found on our website **www.friendsoffairford.org.uk** and the names of our existing team of trustees are listed on the Charity Commission's website.

Friends of Fairford & Lechlade Communities (Reg. Charity No. 1180059)



Friends of Fairford and Lechlade
Communities

Registered Charity Number: 1180059



EDNA DAWES LUNCH CLUB

The Edna Dawes Lunch Club is organised by The Friends of Fairford and Lechlade Communities at Fairford Hospital.

The Lunch Club is ideally for the isolated and lonely members of the community aiming to provide a sociable day out on a regular basis. It can also be used to support carers who can benefit from some respite.

The Lunch Club includes a morning activity, a hot meal with pudding, a group activity and hot drinks throughout the day. The cost for the day is £10 which includes transport if necessary.

**REGISTER YOUR
INTEREST NOW**

Contact Katie Bull, EDLC Team Leader



07713607106



EDLC@friendsoffairford.org.uk



www.friendsoffairford.org.uk



LOGS FOR SALE

The Cotswold Canals Trust provides a delivery service of seasoned Ash logs for wood burners and open fires

Delivery is available within a 16 mile radius of Driffield

The Trust is a charity and exists to progress the restoration of the Cotswold canals. If you support this ambition, or would just like some logs, please visit www.cotswoldcanals.org/support-us/log-sales or call 01453 752568 for details

Your support will directly help the restoration of the Thames and Severn Canal and Stroudwater Navigation



LOCAL DISCOUNT

PUREDRIVE ENERGY

Calling Gloucestershire...

Save 75%* on Your Energy Bills

You can save a significant amount on your home energy bill with a Puredrive energy storage battery and inverter solution without the need for solar.



Fully Integrated Energy Products

Puredrive's Smart APP integrates energy products and dynamic time-of-use tariffs seamlessly, and manages your energy so you don't have to.

Automate and maximise your savings - hassle free!

Why Puredrive?

Our battery storage is smarter, faster and longer-lasting, meaning you will get the best return on investment and fastest payback on the market in less than 5 years!* Supported by over 100 technical staff based locally in Toddington!

Get A Quote Now!



Scan and Start Saving...



01386571544

30% Off

*75% savings are made possible in conjunction with a time-of-use energy tariff



Tuesday: 5:30pm – 7:30pm
Down Ampney Football Club Car Park

UPCOMING DATES

13th
February

27th
February

12th
March

26th
March

"Best fish and chips I've ever had. Very tasty and beautifully cooked.
Would highly recommend a trip out to their van. Thank you so much."



Nails2You

by Julie

A Professional Gel Manicure/Pedicure in Your Own Home

"The Gel Bottle" Vegan Colours for a Quality Robust Finish. Builder Gel Strengthener & Nail Art Options Available

Established Mobile Nail Technician based in South Cerney, providing "at home" treatments in Cirencester & surrounding villages. I offer daytime, evening & weekend appointments.

Now Offering Gel Pedicures

07740 337441

theguild of Nail Technicians

Gift Vouchers Also Available



Principal Dentists:

Beverley DeRenzy Channer BVSC MPhil BDS(Hons)
Julia Winstone BDS

Dental Hygienists:

Anne Dunn EDH
Natalie White RDH

Practice Manager:

Sally Humphries

reception@crickladedentist.co.uk

01793 750388

104 High Street, Cricklade SN6 6AA

Looking for a top-quality haircut or styling service? Look no further than Wetcutz, your go-to destination for expert hair care.

Our team of experienced stylists is here to help you achieve the look you've been dreaming of, with a wide range of services to suit any style or budget. And now, with our new extended hours, it's even easier to book your appointment at a time that works for you. Visit us today at wetcutz.co.uk to learn more and schedule your next appointment.

www.wetcutz.co.uk | tel: 01285 869880

Unit 5 The Laurels | Clarks Hay | South Cerney | GL7 5UA
Open six days a week - Mon to Thur 9.30am - 5pm
Friday 9.00am - 6pm and Saturday 9.30am - 2pm





CRICKLADE FOOTCARE

Clinic in Down Ampney

Toe nail cutting & filing, treatment of hard skin, corns
and thickened nails including the diabetic foot.

Call: 07966 573127

Nicky Spice MCFHP MAFHP



Ottoe

Ear Wax Removal

Phil and Nicky Spice
Ear Care Practitioners

Don't suffer in silence, it could just be wax

Microsuction / Digital Otoscopy /

Hearing Test

Down Ampney clinic and home visits

✉ ottoewaxremoval@gmail.com

☎ 07597764493

BLACKWELLS

Est 1916

01793 611060

38 CHENEY MANOR ROAD, SWINDON SN2 2NS
WWW.BLACKWELLSOFSWINDON.COM

**BLACKWELLS
OF CRICKLADE**

Est 1916

01793 750225

THAMES HOUSE, THAMES LANE, CRICKLADE, WILTSHIRE SN6 6BH
WWW.BLACKWELLSOFCRICKLADE.COM

**COWLEY
& SON LTD**

Est 1871

01285 653298

TRIANGLE HOUSE, 62 VICTORIA ROAD, CIRENCESTER, GL7 1ES
WWW.COWLEYANDSON.COM

Independent Funeral Directors

24 hours a day, 365 days a year. Interest free pre-payment funeral plans.

OUR FAMILY WILL CARE FOR YOUR FAMILY



Golden Charter
Funeral Plans





Electrikl-Uk

Brighter ideas

KEVIN LITTLE

f mobile: 07825 300104 **f**

www.electrikl-uk.co.uk



PETER GODDARD

Driving Instructor

Tel: 01793 752212 Mobile: 07785 234167

Email: peterdgoddard@hotmail.com

TREVOR CARR

Bell Lane, Poulton

01285 851 306

MOT's, Body Work, Insurance work,

Exhausts & Batteries

All makes serviced and repaired



EST. 1977

CRICKLADE

School of Motoring

Keith Walker Dip D.I.

M.I.A.M. M.S.A. R.o.S.P.A.

www.crickladeschoolofmotoring.co.uk

LEARNER, ADVANCED, MOTORWAY
& REFRESHER COURSES.

Tel: (01793) 709883



Dudman
ELECTRICAL SERVICES

Your Local
Electrician

Domestic • Commercial • Industrial • Agricultural

Call John on

07970 321644

01285 656866



All aspects of electrical work undertaken

dudmanelectrical.co.uk

info@dudmanelectrical.co.uk



J M G O U G H
D E C O R A T I N G



Interior and exterior decorating,
dustless sanding, airless spraying, paint effects
07887427905 - jmgoughdecorating@gmail.com

A Slade & Son
Funeral Directors

01285 656336

Family firm. Chapel of Rest.
Ridgeway House, 35 Dyer Street,
Cirencester

Email: asladeandson@gmail.com



CLEEVELY MEMORIALS

Specialists in Finest Quality
Individual Memorials

In Stone, Granite, Marble & Slate

Unit 5b, 83 Prestbury Road,
Cheltenham GL52 2DR

01242 236236



Email: carolinecleevely@hotmail.co.uk

www.cleevelymemorials.co.uk

Heatworks

Heating & Plumbing Services

Will Wyatt-Beckett

07795 270 063

heatworksheating@yahoo.com

www.heatworksheating.co.uk



Door 2 Door

Executive Travel



EXECUTIVE CHAUFFEUR DRIVEN TRAVEL SERVICE IN DOWN AMPNEY AND THE COTSWOLDS

Door 2 Door is a professional and sophisticated chauffeur service with over 15 years of experience in the industry. Our friendly and proficient drivers have the expertise and skill set to deliver a range of exceptional chauffeur services to the highest standard.

This is why we have a long list of happy clients in South Cerney, the Cotswolds, London, throughout Gloucestershire and surrounding areas.

COMFORTABLE AND STRESS-FREE

We aim to make your entire experience with Door 2 Door as comfortable and stress-free as possible. From the initial booking to reaching your destination, we always go the extra mile to provide a personal chauffeur service of the highest standard. Our pleasant and adept drivers will ensure that you reach your destination safely, in comfort and in style

01285 407406
07582 009440

info@door2door.uk.com

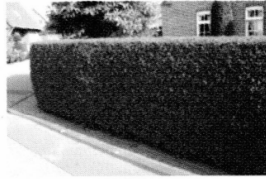
www.door2door.uk.com



OAKSVIEW

TREE & GARDEN SERVICES

Supplying quality work at affordable prices for everyone



Free quotations given without obligation, No pushy sales person will call

01793 238854 - 07767 385836



OAKSVIEW TREE & GARDEN SERVICES

SERVICES INCLUDE:

- Tree Lopping or Felling • Fruit Trees Pruned • Hedge Cutting
- Landscaping • All types of Fences & Gates erected
- Garden Clearance • Drives, Paths & Patios Cleaned

• Prompt Professional Service with over 25 years experience

• Registered Waste Carrier • Public Liability Insured

• Free quotations given without obligation, No pushy sales person will call

01793 238854 - 07767 385836

Email: oaksview@email.com

You have the right to cancel any contract within fourteen days.

Calcutt Park, Calcutt, Cricklade, SN6 6JR

myBuilder
.com

Rated Proud Member Of
People.com
for quality, local tradesmen

Village Directory

Down Ampney Newsletter	Editor: Su Moody 01793 750611, DownAmpneyNews@gmx.com. Treasurer: Andrew Scarth
Cotswold District Council	www.cotswold.gov.uk 01285 623000 Cllr. Lisa Spivey, email: lisaspivey4@gmail.com
Gloucestershire County Council	www.gloucestershire.gov.uk 01452 425000 Cllr. Lisa Spivey, email: lisaspivey4@gmail.com
Refuse Collections	Food caddy weekly Friday 7am. All other bins & bags on alternate Fridays.
Parish Council	Chairman: Mr Gareth Cope 07764 829821 Clerk: Mrs Julia Kilminster 07828 855676, email: downampneypc@gmail.com
Gloucestershire Police	The Forum, Cirencester GL7 2QY Mon-Sat 8am-8pm www.gloucestershire.police.uk
Neighbourhood Watch	Report incidents by calling 101 or visit Gloucestershire.police.uk IN EMERGENCY call 999 Co-ordinator: Julia Campbell – 07743930453 downampneyNWS@gmail.com
Village Hall NEW VOLUNTEERS REQUIRED	Available to hire for parties, wedding breakfasts, clubs, meetings, etc. www.downampneyvillagehall.co.uk Contact: NEW BOOKING SECRETARY WANTED, bookings@downampneyvillagehall.co.uk
Village Shop NEW VOLUNTEERS REQUIRED	Next to Village Hall. Open M-F 9am-12 noon, Sat&Sun 9am-12 noon Contact: 01793 752590 www.downampneyvillageshop.co.uk Volunteers are always needed. Contact: Tony Peel 07751 723399, simpeel@btinternet.com
Post Office	In the Village Shop. Open Mon, Tues, Thurs, Fri 9am-12 noon 01793 750385
Village Web Site	For news, local information, and useful links. www.downampneyvillage.co.uk
Down Ampney Village Facebook	www.facebook.com/Down-Ampney-Village-176038752590936/community/
Down Ampney Online Facebook	www.facebook.com/groups/DownAmpneyOnline/ Email: su.moody1889@gmail.com to post to the Facebook page if you don't use Facebook
Down Ampney Businesses and Services Facebook	Adverts and information by local businesses and services www.facebook.com/groups/DAOnlineBusinessesandServices/
Wilts & Gloucestershire Standard	News desk: email news@wiltsglosstandard.co.uk 01453 769427 Submit articles, events & photos online: www.wiltsglosstandard.co.uk/send-us-your-news/
Cotswold Community Wellbeing Service	A free and confidential service which offers support to help improve your health and wellbeing. Amanda Wragg 07738 106384 email: cws.grcc@nhs.net
Football & Social Club	Open Fri & Sat 7:30-11pm, Sun 7:30-10:30pm. Contact: Sandra Wyndow 01793 750983
Village Primary School	Contact: School Administrator, Mrs S Woodruffe 01793 750294 admin@downampney.gloucs.sch.uk www.downampney.gloucs.sch.uk
All Saints' Church	Open daily 10-4. Services: see pg 3 / Church notice board / www.ampneychurches.info Contact: The Rev'd Canon John Swanton, The Rectory, Ampney Crucis 01285 851309 Church Wardens: Mr G Newman 01793 750087, Mrs A Stokes 01793 750674
Fix My Street	Report issues within Down Ampney: potholes, fly tipping, etc. www.fixmystreet.com
Good Neighbours	Collection of prescriptions and transport to medical appointments for older members of our community. Contact: Mrs Caroline McKemey 01793 751780
Library Service	Contact: 01285 659813 www.gloucestershire.gov.uk/libraries/mobile-timetables
Down Ampney Fundraising Group	Contact daevents@gmx.com or Maureen Gregory on 07813 035473
Down Ampney Arts & Craft Circle	1:30-4pm on second and fourth Tuesdays of the month in the Village Hall. Email: DAACCGL7@gmail.com www.facebook.com/groups/DAACC/
Gardening Club	Meets at 7:30pm on third Thursday every month except August. Contact: Karen Dangerfield 01793 752529 email: karendangerfield23@yahoo.com
Tennis Club	Courts next to Village Hall. https://clubspark.lta.org.uk/DownAmpneyTennisClub Contact: Tony Peel 07751 723399 email: tennis@downampneyvillage.co.uk

The Editor and the Treasurer produce this publication for the convenience of the Villagers. No liability can be accepted by the Editor, the Treasurer, or Down Ampney Parish Council for any losses, however caused, from this publication. The Editor reserves the right, at their discretion, to amend or exclude any articles submitted for publication. Nonetheless, the contents of the published articles, views expressed, and contents of advertisements are solely the responsibility of their authors and advertisers, not the publishers, the Editor, or the Treasurer.